

Robert Samuels 2003

Submission to
House of Representatives Standing Committee on Environment and Heritage
Sustainable Cities 2025 Inquiry

Urban Heat Islands

Cities modify their climates. Urban form, thermal sinks and natural coolers interact with both solar and anthropogenic radiation, absorbing and emitting *heat*: the active ingredient in generating the urban heat island phenomenon. High-rise, high thermal-mass building *canyons* magnify the impact of the built environment on urban climate (Arnfield, *et al* 1999; Santamouris, 2001), trapping heat and distorting air movement. The temperature of this urban air dome ranges up to 10°C ([www.NASA](http://www.nasa.gov)), even 16°C in Athens (Santamouris, 2001).

Micro-greenhouse warming events result, where local weather patterns are affected - precipitation, thunderstorms, hail and violent winds exacerbated, even downwind of urban hotspots (Bornstein and Lin, 1999). These impacts are over and above the urban warming itself, which has energy, comfort and liveability affects besides serious health impositions on urban populations, particularly the more vulnerable - over ten thousand people dying in France alone during the 2003 heatwave. Human behaviour generally is inherently associated with temperature.

An inevitable consequence of using energy is waste heat, which is deposited in the environment, here the built-environment. Multiplied at urban scale this thermodynamic impact is likely to be considerable. Energy consumed for cooling cities is simultaneously a massive source of GHG emissions; here exacerbated by the UHI phenomenon.

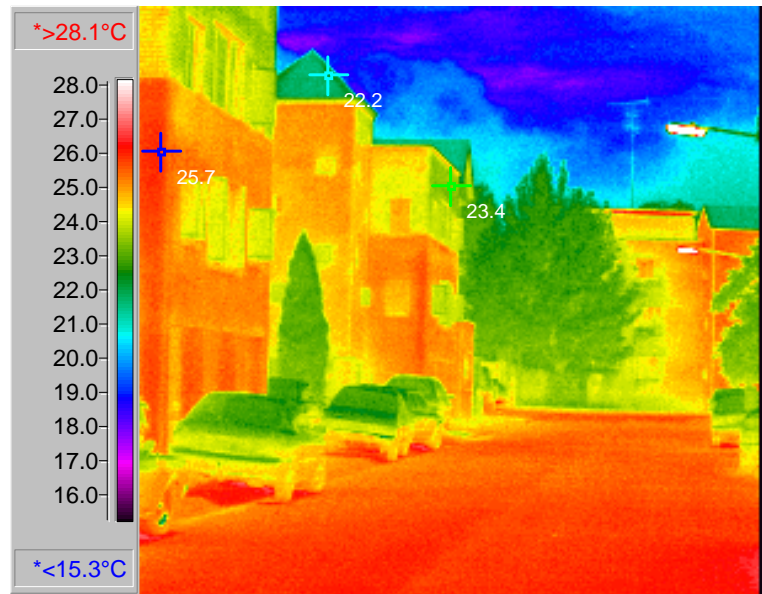
Anthropogenic lifestyle emissions are insidious, for instance, our ubiquitous use of the internal combustion engine - a potent if invisible source of waste heat; and refrigerative air-conditioners do not remove heat but simply shift it from the interiors of buildings to the urban atmosphere/climate from where, ultimately, it will impinge on the building yet again..

Inadvertently too the impact of urban air pollution/photochemical smog is magnified: evaporative emissions of VOCs are three times higher on a warm summers day than an average winter day (see www.LBL).

Urban heat is a multi-faceted form of pollution, ultimately.

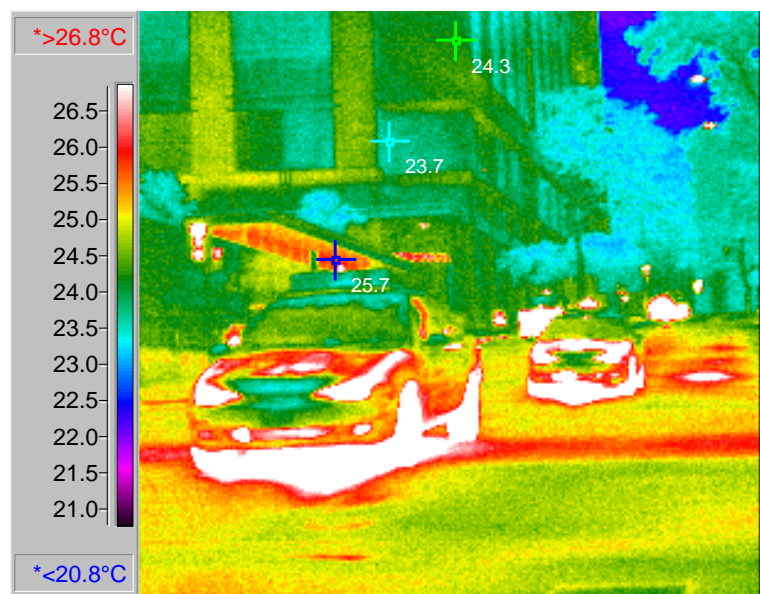
‘Wintry’ nations and cold city people might be forgiven for thinking that some warming might not be a bad idea, forgetting that the affect is much more complex, including an exaggeration of local weather extremes, whatever they are - compounded by the nature of our twentieth century cities.

Heat is inescapably embodied in the built environment, at whatever scale. In the thermal images below several such patterns are evident - even an ‘urban village’ setting even at Sydney Harbour’s edge is not immune. The evaporative-cooling capacity of trees is also evident (here only relatively cooler, trapped in the heat sink); and the parked cars have now cooled (ie have already emitted their heat), but the road will remain a major source of heat until long past midnight.



'urban village' heat emissions @22^h

Internal combustion engines and exhaust-systems radiate heat above 80°C, tyres emit at about 40°C – both are off the scale in the image below, but have been measured independently using a hand-held radiant-temperature device. This heat is emitted to the urban air mass, absorbed by the building mass and roads, and re-radiated when temperature gradients permit. Again, trees are valiantly attempting to cool the environment (see also: Givoni, 1991).



Sydney CBD @ midnight; hot buildings and roads radiate to night air, cars are very hot

Without presuming to know the solution, and given that the interaction between architectural, urban and natural elements is extremely complex (Givoni, 1998), not to mention the human factors, several 'sustainable design' parameters do seem obvious in this regard. A greener city, first and foremost, would surely act to moderate this heat island effect. Landscape can be integrated into and onto building facades and roofs, and building surfaces can be shaded, while mini-parks, tree-lined streets (also shading road surfaces) and running water -even stormwater absorbed in porous paving (Kinouchi and Kanda, 1998) induce natural evaporative cooling (complicated in humid climates). Minimising the canyon configuration (street width to building height geometry) minimises wind-tunnelling, and heat trapped and stored in canyons - which reduces long-wave heat loss/cooling (Oke 1982). Maximising 'skyview (via building setback, height containment and variation, façade slope...and interspersed urban squares) exposes the city to the cool night-sky sink. Scaling back hot transport systems and/or placing them underground (see also Golany, 1996) could simultaneously prioritise pedestrian precincts, with many positive consequences for both sustainability and liveability.

Other urban design parameters also seem to be logically implicated: the compactness of a city (urban mass diminishes heat-exchange capacity/cooling: Oke, 1982), while the contiguity of the streetscape minimises surface exposure. 'Organic' or cellular street grid structures with multiple urban squares/nodes should better simulate 'natural aerodynamic roughness' than orthogonal canyon grids which seriously impact airflow, turbulence and diffusion and hence affect the climate and air quality of urban areas (Oke and Grimmond 1998).

The benefits of maximising low-emission surface treatments (see Akbari, *et al* 1990: energy use for cooling buildings is reduced) seems less obvious at urban scale given the source of the heat is left unaltered, and bouncing heat back to the urban air mass is the primary generator of

urban climate modification. Possibly a system allowing buildings to absorb urban generated heat - channelled to thermal sinks where it could be recycled and put to use, warming water at the very least, while simultaneously drawing heat away from the ambient air mass – is only an ideological and technological step away?

Essentially, anything that *minimises* the re-emission of heat and the spatial-disruption of air-mass flow can be considered more ecologically benign.

These design notions are the antithesis of planning visions espoused by the ‘new internationalists’ in the early 20th Century (Le Corbusier, 1929) and still ubiquitously prevalent today in the urban design policies of both developed and developing countries: high-rise, high-density, car-oriented canyon-cities. Prior to that time urban theorists over the centuries espoused a more climate-neutral system for city planning, from Vitruvius (directing streets away from prevailing winds) via Alberti (narrow winding streets minimising climatic extremes) to Palladio (narrow streets and high houses providing mutual shade in hot climate cities) [see: Mumford 1991 and Morris 1994]. This ‘perennial urban design paradigm’ is still functional today in ‘old city’ configurations - despite varying population densities and widely different cultural and climatic settings. Cultural heritage is still intact here too, and together with naturally integrated mixed-land-uses help make these cities particularly liveable. With technologically advanced cool, renewable energy systems invisibly integrated into buildings (and generated throughout cities), a greening city regime, and pedestrian prioritisation, the best of the past and future could coincide (Samuels, 1998; 2002).

Given that the weather occurs in the troposphere (lower 11kms of the atmosphere) and massive urbanisation is the principal settlement experience of contemporary society, it does not seem farfetched to

imagine worldwide urban heat emissions and urban generated greenhouse-gases synchronously impacting on global climate too.

For a multitude of reasons, not the least of which is the prevailing uni-dimensional focus on ‘energy’, UHI should be seriously researched and given full consideration in urban design policy. There are still as many questions as answers, certainly. Urban climatologists (the majority of those cited here) tend to have mathematical understandings of these complex relationships, and a preference for simulation models of urban thermal settings. My approach is from the urban design and humanist (sustainability is social and cultural too) points of view – less empirical but more holistic and ultimately more realistic, since to my knowledge (limited, true) the applicability of such mathematical models in city design is absolutely minimal: this is *not* how architects, planners and landscape architects think. For these reasons I choose to simplify the complex of interactions via thermal imagery (an expensive alternative: the cameras are sophisticated computers and do not come cheaply); and would recommend a research program comparing infrared imagery of a multitude of urban configurations, in old and new cities alike, and in as many climates as possible, in an attempt to empirically extract thermal principles which might be applied in designing sustainable (ie cooler) Australian cities.

Bibliography

- Akbari, H., Rosenfeld, A.H. and Taha, H., 1990, *Cooling Urban Heat Islands*, Proc. 4th Urban Forestry Conf., St. Louis.
- Arnfield, A.J., Herbert, J.M. and Johnson, G.T., 1999, *Urban Canyon Heat Source and Sink Strength Variations: A simulation-based sensitivity study*, Congress of Biometeorology and International Conference on Urban Climate, WMO, Sydney, Nov.
- Bornstein, R. & Lin, Q., 1999, *Urban Convergence Zone Influences on Convective Storms and Air Quality*, Proceedings of the WMO International Conference, *op.cit*
- Givoni, B., 1991, *Impact of Planted Areas on Urban Environmental Quality: A review*, Atmospheric Environment, 25B(3): 289-99.
- Givoni, B. (1998), *Climate Considerations in Building and Urban Design*
- Golany, G.S. 1996. Urban design morphology and thermal performance. *Atmospheric Environment, Oxford, England*, 30(3): 455-465.
- Le Corbusier, 1929, *The City of Tomorrow*, Arch. Press, London.
- Kinouchi, T. and Kanda, M. 1998. Cooling effect of watering on paved road and retention in porous pavement. Proceed. AMS 13th Conference on Biometeorology and Aerobiology, Albuquerque, New Mexico. 1998.
- Mumford, L., 1961/91, *The City in History: Its origins, its transformations and its prospects*, Penguin.
- Morris, A.E.J., 1972/94, *History of Urban Form: Before the industrial revolutions*, Longman Scientific & Technical, N.Y.
- NASA Global Hydrology and Climate Centre, www.ghcc.nasa.gov.
- Oke, T.R., 1982, *The Energetic Basis of the Urban Heat Island*, Quarterly Journal of the Royal Meteorological Society, 108 (455): 1-25.
- Oke, T. and Grimmond, S. 1998. How Rough is a City? Proceed. of the AAG 94th Annual Meeting, Boston, USA. 1998.
- Santamouris, M., 2001, *The Canyon Effect*, in M. Santamouris (ed.), Energy and Climate in the Urban Built Environment, James & James, London.
- Samuels, R., 1998, *Urban Climate and Urban Pollution: Sustainability and Habitability in Urban Environments*, Proceedings of the First 'Quality of Life in Cities' Conference, Singapore.
- Samuels, R. 2002, *Perennial Old-City Paradigms*, in C.A. Brebbia, J.F. Martin-Duque and L.C. Wadhwa (eds.), The Sustainable City II: Urban Regeneration and Sustainability, p693-703, WITPress, Southampton.

◇ Thermal Photographs/author